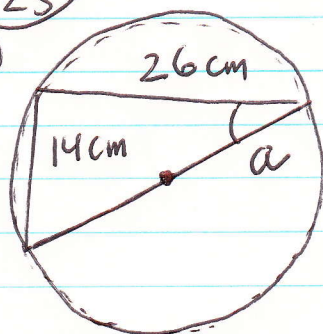


(#25)

(2p)

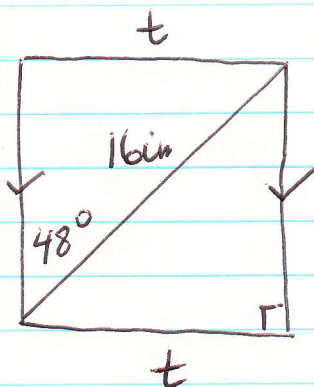


$$\tan a = \frac{14}{26} = 0.5385$$

$$a \approx 28^\circ$$

(#27)

(3p)



$$\sin 48^\circ = \frac{t}{16}$$

$$\sin 48^\circ \approx 0.743$$

$$0.743 = \frac{t}{16}$$

$$t = 16 \cdot 0.743 = 12 \text{ in}$$